

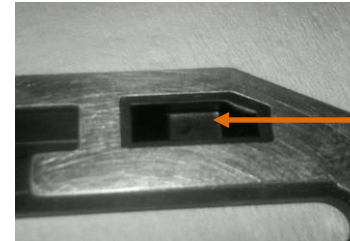
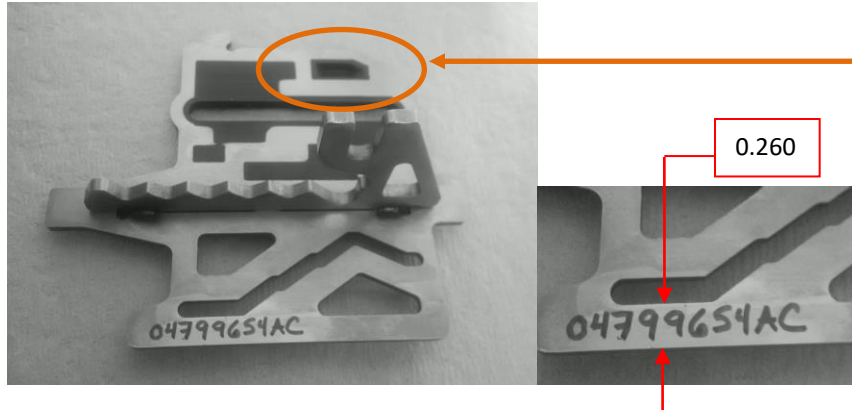
**PLEASE VERIFY YOU ARE USING THE CORRECT TRS SENSOR
PLATE BEFORE INSTALLATION**

45RFE – 545RFE – 68RFE – 65RFE – 66RFE SOLENOID PLATE USAGE TABLE

Application	Original Solenoid	Replacement Solenoid	Correct Solenoid Plate (See Back Page for ID)
'99-03 – 45RFE / 545RFE	Black	Black or White	Type A – Black Type B - White
'04-Up– 545RFE	White	White	Type B
'07-08 - 68RFE	White	White	Type B
'09-Up – 545RFE / 68RFE	Gray	Gray or White	Type B: Vehicles WITH manual 1 & 2 positions on shifter Type C: Vehicles WITHOUT manual 1 & 2 positions on shifter
'11-Up – 65/66RFE	Gray	Gray or White	Type B: Vehicles WITH manual 1 & 2 positions on shifter Type C: Vehicles WITHOUT manual 1 & 2 positions on shifter

45RFE / 545RFE / 68RFE / 65RFE / 66RFE - TRS SENSOR PLATE IDENTIFICATION

45RFE – 545RFE – Type “A” or “B” (See Notes)

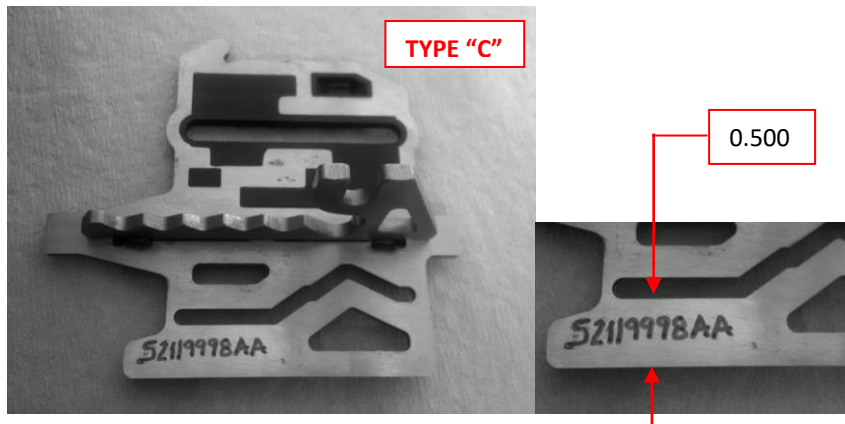


Pocket Depth = 0.118 – Type “A”

Pocket Depth = 0.156 – Type “B”

Pocket for Pin T41

68RFE – 65/66RFE – Type “C” (See Notes)



NOTES:

1. Affected Part Number/s: **45RFE / 545RFE / 68RFE / 65RFE / 66RFE** Solenoid Modules – A3012, A3013 and A3034.
2. Type “A” bracket is not available from Chrysler
3. Type “B” plate is Chrysler # 04799654AC
4. Type “C” plate is Chrysler # 52119998AA
5. Reference Documents: Chrysler Instruction Sheet K6855528AA, ATSG Technical Service Document 08-34



ADVANCED POWERTRAIN
ENGINEERING, LLC

QUESTIONS?

CALL US AT 812-258-9420

E-MAIL US AT info@advpowertrain.com

SELL US CORES?

CALL US AT 812-258-9423

E-MAIL US AT cores@advpowertrain.com